

H3 Hemagglutinin (HA) Protein from Influenza A Virus, A/Darwin/9/2021 (H3N2), Recombinant from Baculovirus

Catalog No. NR-59305

This reagent is the tangible property of the U.S. Government.

Product Description:

A recombinant form of the H3 Hemagglutinin (HA) protein from influenza A virus, A/Darwin/9/2021 (H3N2), was produced in Sf9 insect cells using a baculovirus expression system. The recombinant ectodomain of the HA protein and a hexahistidine tag was purified by ion exchange and affinity chromatography. This item was manufactured and subjected to quality control testing by St. Jude Children's Research Hospital (SJCRH), Memphis, Tennessee, USA.

Lot: 70059857

Manufacturing Date: 19JAN2023

TEST	SPECIFICATIONS	RESULTS
Appearance	Report results	Opalescent
SDS-PAGE Analysis	Report results	Major band of ~75 kDa (Figure 1)
Identification by Western Blot Analysis ¹	Reactive	Reactive (Figure 2)
Concentration by Bicinchoninic Acid Assay Bovine Serum Albumin (BSA; standard)	Report results	1.2 mg/mL
Final Product		
Amount per vial	Report results	240 µg
Volume per vial	Report results	0.2 mL
Functional Activity		
Hemagglutination activity using 0.5% turkey red blood cells	Report results	Positive (1:32)
Filtration	0.2 µm sterile-filtered	0.2 µm sterile-filtered
Endotoxin	Report results	≤ 0.5 EU/mL

¹Using a 1:2000 dilution of anti-H3 polyclonal ferret antiserum F. 2022-3 (2009) [against A/Hong Kong/45/2019 (H3N2) influenza virus] as primary antibody.

Figure 1: SDS-PAGE Analysis

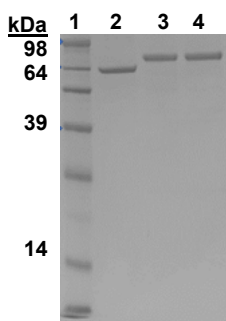
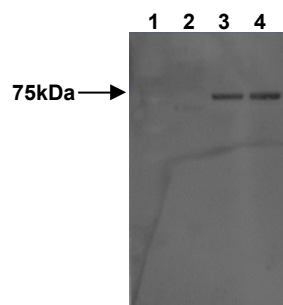


Figure 2: Western Blot Analysis



Lane 1: Molecular weight markers
Lane 2: BSA (1.0 µg)
Lane 3: NR-59305, 1.0 µg (pre-vial)
Lane 4: NR-59305, 1.0 µg (post-vial)

/Sonia Bjorum Brower/

Sonia Bjorum Brower

23 JUN 2023

Technical Manager or designee, ATCC Federal Solutions

ATCC®, on behalf of BEI Resources, hereby represents and warrants that the material provided under this certificate has been subjected by the contributor to the tests and procedures specified and that the results described, along with any other data provided in this certificate, are true and accurate to the best of ATCC®'s knowledge.

ATCC® is a trademark of the American Type Culture Collection.

You are authorized to use this product for research use only. It is not intended for human use.

