

Genomic DNA from *Plasmodium falciparum*, Strain W2

Catalog No. MRA-157G

Product Description:

Genomic DNA was extracted from a preparation of *Plasmodium falciparum* (*P. falciparum*), strain W2. MRA-157G lot 70051094 was extracted from a cell culture of BEI Resources MRA-157 seed lot 59210231 using proprietary technology and vialled in AE buffer (10 mM Tris-HCl and 0.5 mM EDTA, pH 9). Testing was completed on bulk material prior to freezing.

Lot: 70051094

Manufacturing Date: 01JUN2022

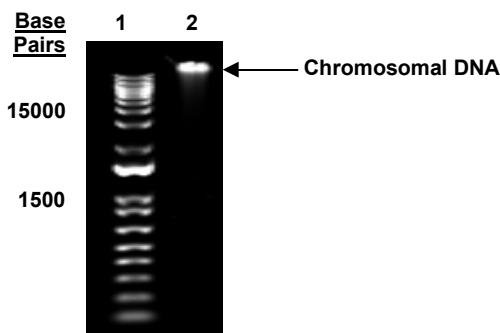
TEST	SPECIFICATIONS	RESULTS
Sequencing of Merozoite Surface Protein 2 (MSP2) gene (~ 860 base pairs)	Consistent with <i>P. falciparum</i>	Consistent with <i>P. falciparum</i>
Agarose Gel Electrophoresis	High molecular weight chromosomal DNA	High molecular weight chromosomal DNA (Figure 1)
Concentration by NanoDrop™ Measurement	Report results	~ 0.5 µg in 50 µL per vial (10 µg/mL)
Amount per Vial	Report results	~ 0.5 µg
Functional Activity by PCR Amplification MSP2 locus ¹	~ 600 to 900 base pair amplicon	~ 800 base pair amplicon
OD₂₆₀/OD₂₈₀ Ratio	1.7 to 2.1	1.8
Protozoan Inactivation Human erythrocytes exposed to 10% of total yield of MRA-157G ^{2,3}	No parasitemia observed	No parasitemia observed
Mycoplasma Contamination DNA Detection by PCR	None detected	None detected

¹Primer sequences and conditions for PCR are available upon request.

²20 days in complete RPMI culture medium at 37°C in sealed flasks outgassed with the blood-gas atmosphere (90% N₂, 5% CO₂, 5% O₂). Complete RPMI culture medium was changed and parasitemia was checked every 1 to 3 days.

³An extraction procedure was used that has been shown to consistently inactivate 100% of *Plasmodium* parasites.

Figure 1: Agarose Gel Electrophoresis



Lane 1: Invitrogen™ TrackIt™ 1 Kb Plus DNA Ladder
Lane 2: ~ 200 ng of MRA-157G

Certificate of Analysis for MRA-157G

/Sonia Bjorum Brower/

Sonia Bjorum Brower

21 AUG 2023

Lead Technical Writer or designee, ATCC Federal Solutions

ATCC®, on behalf of BEI Resources, hereby represents and warrants that the material provided under this certificate has been subjected to the tests and procedures specified and that the results described, along with any other data provided in this certificate, are true and accurate to the best of ATCC®'s knowledge.

ATCC® is a trademark of the American Type Culture Collection.

You are authorized to use this product for research use only. It is not intended for human use.

