

Genomic DNA from *Mycobacterium ulcerans*, Strain S4018

Catalog No. NR-51974

Product Description:

Genomic DNA was extracted from a preparation of *Mycobacterium ulcerans* (*M. ulcerans*), strain S4018, which was isolated in December 2006 from the cutaneous lesion of an active Buruli ulcer on a male child in Benin. NR-51974 lot 70022960 was extracted from a bacterial preparation produced from BEI Resources NR-51701 lot 70029957. Genomic DNA was extracted using proprietary technology. NR-51974 lot 70022960 is provided in TE buffer (10 mM Tris-HCl, 1 mM EDTA, pH ~ 8.0).

Lot: 70029960

Manufacturing Date: 27DEC2019

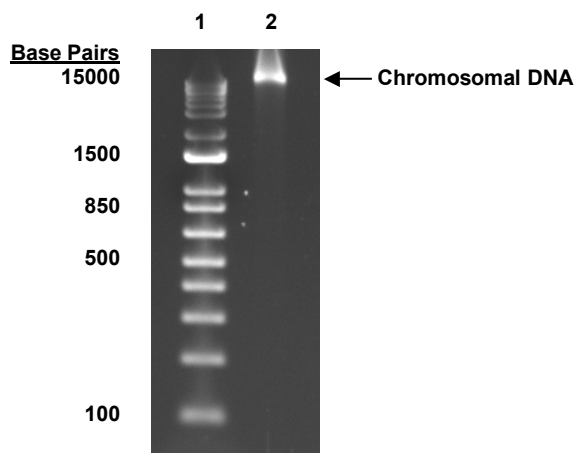
TEST	SPECIFICATIONS	RESULTS
Genotypic Analysis Sequencing of 16S ribosomal RNA gene (~ 1400 base pairs)	≥ 99% sequence identity to <i>M. ulcerans</i> , strain S4018 (GenBank: MDUB01000259.1)	99.9% sequence identity to <i>M. ulcerans</i> , strain S4018 (GenBank: MDUB01000259.1) ¹
Agarose Gel Electrophoresis	High molecular weight chromosomal DNA	High molecular weight chromosomal DNA (Figure 1)
Concentration by PicoGreen® Measurement	0.7 to 1.5 µg in 25 to 100 µL/vial	1.2 µg in 34 µL/vial (34 µg/mL)
Amount per Vial	0.7 to 1.5 µg	1.2 µg
Functional Activity by PCR Amplification 16S ribosomal RNA gene	~ 1500 base pair amplicon	~ 1500 base pair amplicon
OD₂₆₀/OD₂₈₀ Ratio	1.7 to 2.1	1.7
Bacterial Inactivation 10% of total yield plated on agar ^{2,3}	No viable bacteria detected	No viable bacteria detected

¹Also consistent with other *Mycobacterium* species

²60 days at 30°C in an aerobic atmosphere with 5% CO₂ on Middlebrook 7H10 agar with OADC enrichment

³An extraction procedure was used that has been shown to consistently inactivate 100% of Gram-positive and Gram-negative bacteria.

Figure 1: Agarose Gel Electrophoresis



Lane 1: Invitrogen™ TrackIt™ 1 Kb Plus DNA Ladder

Lane 2: ~200 ng of NR-51974

/Sonia Bjorum Brower/

Sonia Bjorum Brower

01 AUG 2023

Technical Manager or designee, ATCC Federal Solutions

ATCC®, on behalf of BEI Resources, hereby represents and warrants that the material provided under this certificate has been subjected by ATCC® to the tests and procedures specified and that the results described, along with any other data provided in this certificate, are true and accurate to the best of ATCC®'s knowledge.

ATCC® is a trademark of the American Type Culture Collection.

You are authorized to use this product for research use only. It is not intended for human use.

