

**Genomic DNA from *Encephalitozoon cuniculi*, Strain CDC:V282**

**Catalog No. NR-59781**

(Derived from ATCC® 50602™)

**Product Description:**

Genomic DNA was extracted from a preparation of *Encephalitozoon cuniculi* (*E. cuniculi*), strain CDC:V282, which was isolated in 1993 from the urine of an AIDS patient in Colorado, USA. NR-59781 was extracted from BEI Resources NR-9703 lot 70057114 using proprietary technology. NR-59781 is provided in 10 mM Tris-HCl, 0.5 mM EDTA, pH 9.

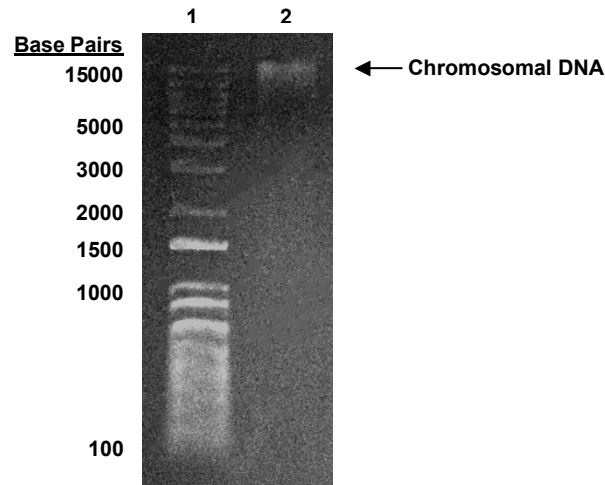
**Lot: 70067385**

**Manufacturing Date: 03FEB2023**

TEST	SPECIFICATIONS	RESULTS
<b>Agarose Gel Electrophoresis</b>	High molecular weight chromosomal DNA	High molecular weight chromosomal DNA (Figure 1)
<b>Concentration by PicoGreen® Measurement</b>	0.2 to 3.5 µg in 20 to 200 µL/vial	0.4 µg in 70 µL/vial (5.8 µg/mL)
<b>Amount per Vial</b>	0.2 to 3.5 µg	0.4 µg
<b>Genotypic Analysis</b> Sequencing of 18S ribosomal RNA (rRNA) gene (~ 1160 bases)	≥ 99% sequence identity to <i>E. cuniculi</i> , Strain GB-M1 (GenBank: AL391737.2)	99.9% sequence identity to <i>E. cuniculi</i> , Strain GB-M1 (GenBank: AL391737.2)
<b>Functional Activity by PCR Amplification</b> rRNA gene <sup>1</sup>	~ 1200 base pair amplicon	~ 1200 base pair amplicon
<b>OD<sub>260</sub>/OD<sub>280</sub> Ratio</b>	1.7 to 2.1	2
<b>Protozoan Inactivation</b> 10% of total yield inoculated in EMEM supplemented with 10% HIFBS in African green monkey kidney epithelial cells (BS-C-1; ATCC® CCL-26™) and incubated for 14 days at 37°C in an aerobic atmosphere with 5% CO <sub>2</sub>	No viable organisms detected	No viable organisms detected

<sup>1</sup>Primer sequences and conditions for PCR are available upon request.

Figure 1: Agarose Gel Electrophoresis



Lane 1: Invitrogen™ TrackIt™ 1 Kb Plus DNA Ladder  
Lane 2: ~ 200 ng of NR-59781

/Sonia Bjorum Brower/  
Sonia Bjorum Brower

10 APR 2024

Technical Manager or designee, ATCC Federal Solutions

ATCC®, on behalf of BEI Resources, hereby represents and warrants that the material provided under this certificate has been subjected to the tests and procedures specified and that the results described, along with any other data provided in this certificate, are true and accurate to the best of ATCC®'s knowledge.

ATCC® is a trademark of the American Type Culture Collection.

You are authorized to use this product for research use only. It is not intended for human use.

