

Brucella abortus, Strain 1336

Catalog No. NR-226

(Derived from ATCC® 10750™)

Product Description:

Brucella abortus (*B. abortus*), strain 1336 was isolated prior to 1949 from a bovine source in the United States. NR-226 was produced by inoculation of the deposited material into Tryptic Soy broth and grown for 13 days at 37°C in an aerobic atmosphere with 5% CO₂. Broth inoculum was added to Tryptic Soy agar kolles, which were grown for 2 days at 37°C in an aerobic atmosphere with 5% CO₂ to produce this lot. Quality control testing was completed under propagation conditions unless otherwise noted.

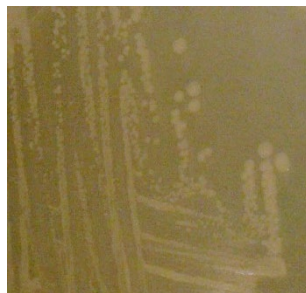
Lot: 63326153

Manufacturing Date: 11MAR2015

TEST	SPECIFICATIONS	RESULTS
Phenotypic Analysis Cellular morphology Colony morphology 2 days at 37°C in an aerobic atmosphere with 5% CO ₂ on Tryptic Soy agar Motility 7 days at 37°C in an aerobic atmosphere with 5% CO ₂ on Remel™ Motility Test Medium w/TTC indicator Hemolysis Biochemical tests Oxidase Urease Hydrogen sulfide production Arginine dihydrolase Arabinose Glucose Xylose	Gram-negative rod Report results Non-motile Report results Positive Positive (> 5 minutes) Positive Negative Positive Positive Report results	Gram-negative rod Irregular, low convex, entire, translucent and cream (Figure 1) Non-motile Non-hemolytic Positive Positive (> 5 minutes) Positive Negative Positive Positive Positive
Genotypic Analysis Sequencing of 16S ribosomal RNA gene (~ 1290 base pairs)	≥ 99% identity with <i>B. abortus</i> , type strain (GenBank: ACBI01000025.1)	99.8% identity with <i>B. abortus</i> , type strain (GenBank: ACBI01000025.1) ¹
Purity 9 days at 37°C in an aerobic atmosphere with 5% CO ₂ on Tryptic Soy agar	Growth consistent with expected colony morphology	Growth consistent with expected colony morphology
Viability	Growth	Growth

¹Also consistent with other *Brucella* species

Figure 1: Colony Morphology



/Sonia Bjorum Brower/
Sonia Bjorum Brower

02 JUL 2025

Technical Manager or designee, ATCC Federal Solutions

/Katalin Kiss/
Katalin Kiss

02 JUL 2025

Principal Investigator, ATCC

ATCC®, on behalf of BEI Resources, hereby represents and warrants that the material provided under this certificate has been subjected to the tests and procedures specified and that the results described, along with any other data provided in this certificate, are true and accurate to the best of ATCC®'s knowledge.

ATCC® is a trademark of the American Type Culture Collection.

You are authorized to use this product for research use only. It is not intended for human use.

