

**Monoclonal Anti-SARS Coronavirus Recombinant Human Antibody, Clone CR3022
(produced in HEK293 Cells)**

Catalog No. NR-52481

This reagent is the tangible property of the U.S. Government.

Product Description:

Human monoclonal antibody CR3022 was identified via an immune phage display library, constructed from lymphocytes of a convalescent severe acute respiratory syndrome coronavirus (SARS-CoV) patient. CR3022 is a neutralizing antibody that targets the receptor binding domain (RBD) of the spike (S) glycoprotein of SARS-CoV. NR-52481 features the CR3022 epitope introduced into a human IgG1k molecule. NR-52481 was produced by transfection of purified plasmids (from BEI Resources NR-53260) in human embryonic kidney HEK293F cells (FreeStyle™), purified by protein G chromatography and vialled in phosphate-buffered saline (PBS), pH 7.4.

Lot: 70035909

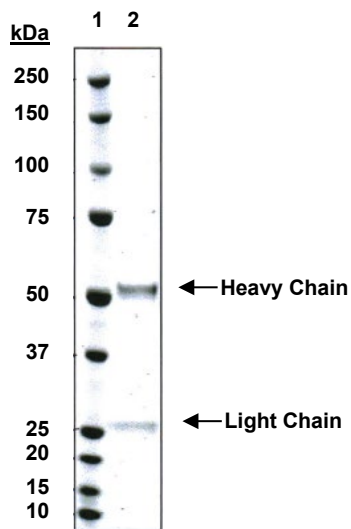
Manufacturing Date: 01JUN2020

| TEST | SPECIFICATIONS | RESULTS |
|--|---|---|
| SDS-PAGE Analysis (Li-Cor Odyssey Imaging) | Correct molecular weight (MW) for heavy and light chains (reduced) Protein bands of interest represent > 90% of total staining intensity | Correct molecular weight (MW) for heavy and light chains (reduced) (Figure 1) Protein bands of interest represent 100% of total staining intensity |
| Concentration by Bicinchoninic Acid Assay Using Bovine Serum Albumin as standard | Report results | 1.3 mg per mL |
| Functional Activity Western blot analysis ELISA | Report results Report results | Reactive ¹ Reactive (Figure 2) ² |
| Sterility | 0.2 µm filter-sterilized | 0.2 µm filter-sterilized |

¹Recognizing 1 µg SARS-CoV-2 RBD protein (BEI Resources NR-52366), using a 1:5000 dilution of NR-52481 as primary antibody.

²Using SARS-CoV-2 RBD protein (BEI Resources NR-52366) as the antigen, and 5% milk as the blank.

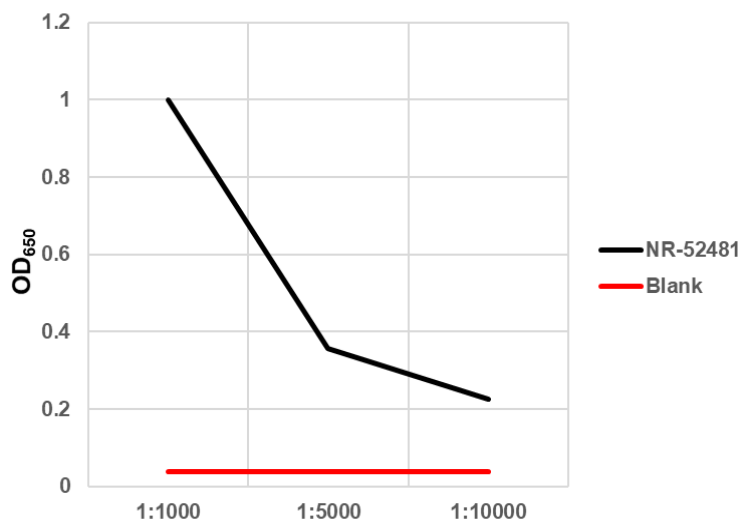
Figure 1: SDS-PAGE Analysis



Lane 1: Bio-Rad Precision Plus™ Protein All Blue Pre-Stained Standard

Lane 2: NR-52481 (1.5 µg; reduced)

Figure 2: ELISA



/Heather Couch/

Heather Couch

03 AUG 2020

Program Manager or designee, ATCC Federal Solutions

ATCC®, on behalf of BEI Resources, hereby represents and warrants that the material provided under this certificate has been subjected by ATCC® to the tests and procedures specified and that the results described, along with any other data provided in this certificate, are true and accurate to the best of ATCC®'s knowledge.

ATCC® is a trademark of the American Type Culture Collection.

You are authorized to use this product for research use only. It is not intended for human use.

